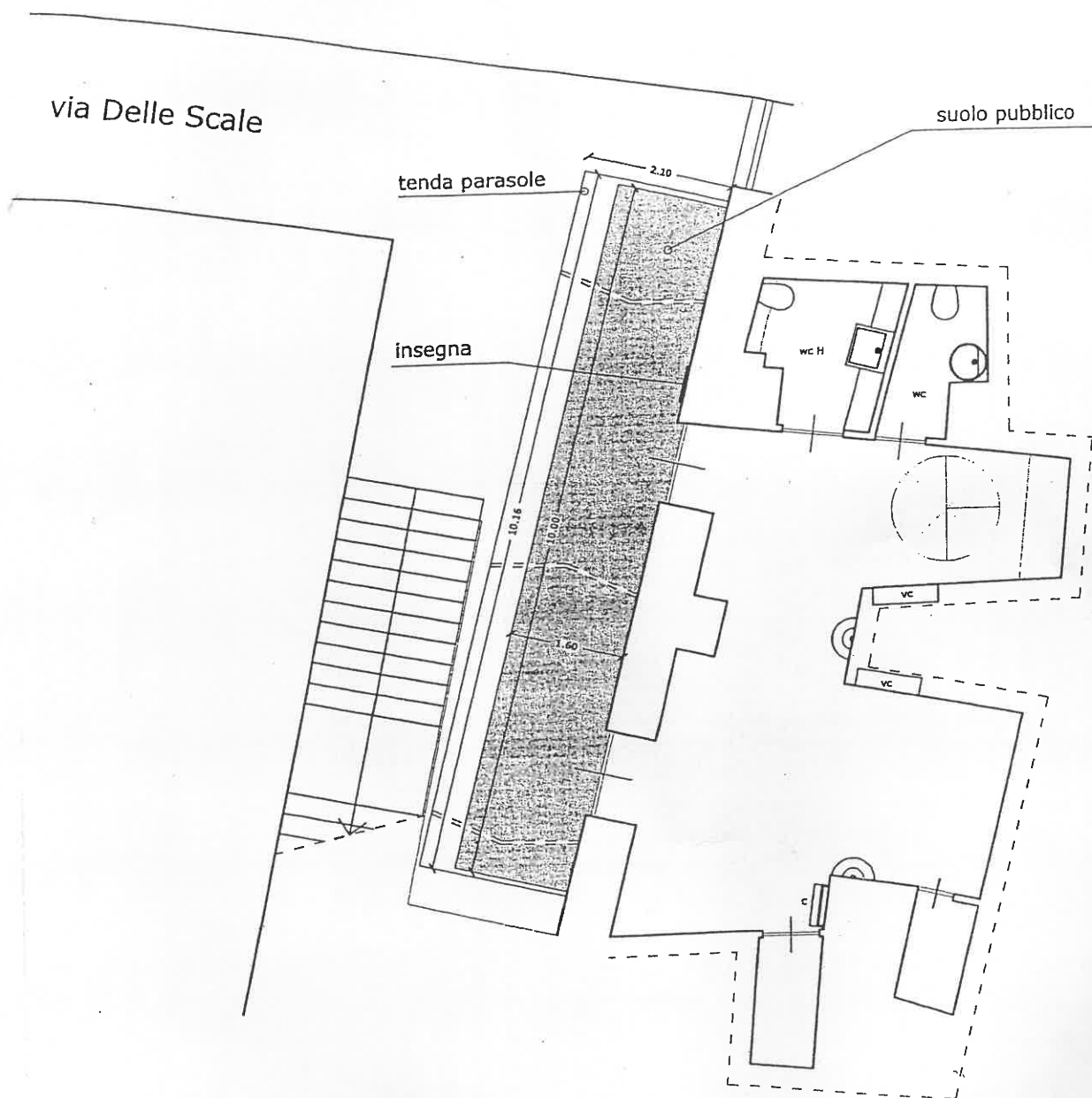




PIANTA PIANO TERRA SU VIA DELLE SCALE



-  spazio da richiedere per occup. suolo pubblico perman. ml. $10 * 1.60 = \text{mq. } 16.00$ da occupare con tavoli e sedie
-  max ingombro tenda parasole con bracci a muro ml. $2.10 * 10.16 = \text{mq. } 21.33$